

Avioq CLx280

Chemiluminescence
Immunoassay Analyzer

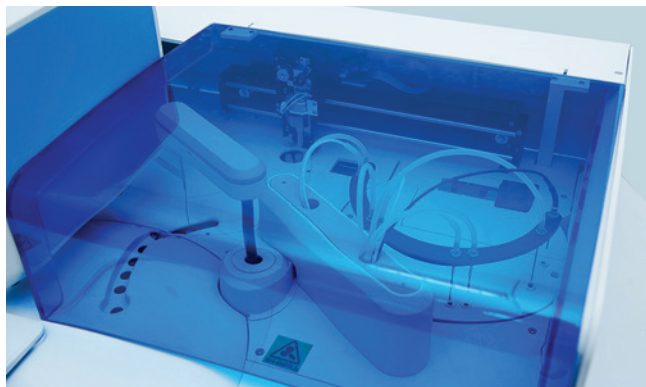




Avioq CLx280

STANDARD

- CE
- Throughput: 280 tests/ hour
- Time for first result: 15 minutes
- 96 sample areas
- 26 reagent areas
- Continuous loading
- Operation Mode: Random, Batch, STAT
- Liquid level detection
- On-board refrigeration
- Auto sample dilution
- Westgard and L-J QC chart
- Reagent, calibration available period tracking
- Barcode reader support
- LIS/HIS connection
- 384 sample tips and reaction cuvettes loaded
- 6 hours walk away time



SPECIFICATIONS/DIMENSIONS

- 771.6 lbs / 350 kg
- 67" x 34" x 53" / 170 cm x 86 cm x 135 cm



Key Technologies

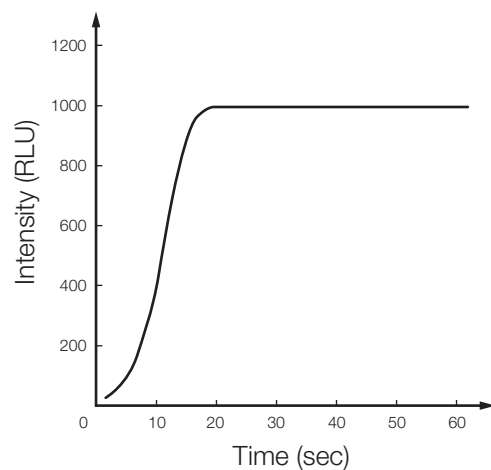
PRINCIPLE: Glow Chemiluminescence

LABELING: Alkaline Phosphatase [ALP]

SEPARATION: Magnetic Microbeads

FITC/anti-FITC Connected Bridge

INNOVATIVE SUBSTRATE



Reaction within 20 seconds

Stable reaction at room temperature

Avioq **VioOne**[™] Test Kits

- Integrated kits, ready-to-use
- 100 tests package
- Calibrations and QC included
- 2-4 weeks on-board stability
- 2-4 weeks calibration stability
- Low consumable cost



Avioq CLx280
VioOne™ Assay Menu

Thyroid	Total T3 Free T3 Total T4 Free T4 TSH anti-TG anti-TPO TRAb Thyroglobulin
Fertility / Hormone	Estradiol Progesterone Testosterone Total-β-hCG Free-β-hCG Prolactin FSH LH
Tumor Marker	CEA CA125 CA15-3 CA19-9 Total PSA Free PSA SCCA NSE CA50 HE4 CYFRA 21-1 CA242 PGI PGII
Inflammation	PCT CRP
Prenatal Screening	AFP F-hCGβ fE3
Anemia	FERRITIN Folate** Vitamin B12**

Kidney Function	NGAL β2-MG Cys-C RBP
Hepatic Fibrosis	CG PIIINP CIV LN HA
Bone Metabolism	Intact PTH BGP 25-OH-Vit D Total CT**
Diabetes	C-Peptide Insulin hGH
Cardiac Marker	Troponin I FABP BNP CK-MB MYO D-Dimer
Allergy	Ig E
TORCH	Toxo IgG Toxo IgM Rubella IgG Rubella IgM CMV IgG CMV IgM
Infectious Disease	HBsAg* HBsAb* HBeAg* HBeAb* HBcAb* HCV*

* CE pending

** In development

