

# Avioq CLx60

Chemiluminescence  
Immunoassay  
Analyzer





## Avioq CLx60

### STANDARD

- CE
- Throughput: 60 tests/ hour
- Operation Mode: Random, Batch, STAT
- Liquid level detection
- Barcode reader support
- Continuous loading
- LIS/HIS connection

### OPTIONAL

- Clot detection
- On-board refrigeration



### CONVENIENT SIZE

- **Benchtop**, 176.4 lbs / 80 kg
- 36.2" x 24.8" x 25.2" / 92 cm x 63 cm x 64 cm

### UNIQUE PIPETTING DESIGN

- Disposable tips for sample and reagent pipetting
- Avoid the contamination

### CUSTOMIZE YOUR TEST

- **Flexible**: Define the sample and reagent area
  - 5-75 sample areas
  - 5-15 reagent areas



## Key Technologies

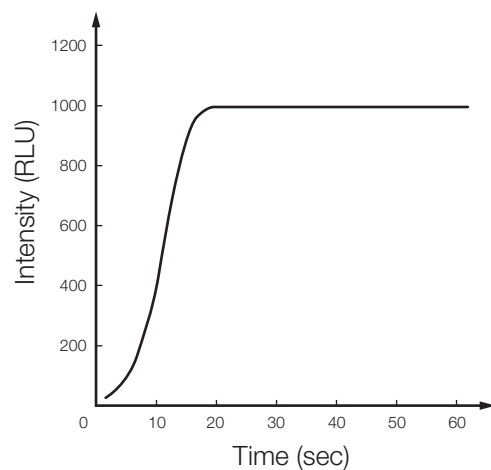
**PRINCIPLE:** Glow Chemiluminescence

**LABELING:** Alkaline Phosphatase [ALP]

**SEPARATION:** Magnetic Microbeads

**FITC/anti-FITC** Connected Bridge

### INNOVATIVE SUBSTRATE



Reaction within 20 seconds

Stable reaction at room temperature

## Avioq **VioOne**<sup>™</sup> Test Kits

- Integrated kits, ready-to-use
- 100 tests package
- Calibrations and QC included
- 2-4 weeks on-board stability
- 2-4 weeks calibration stability
- Low consumable cost



**Avioq CLX60**  
**VioOne™ Assay Menu**

|                            |   |
|----------------------------|---|
| <b>Thyroid</b>             | Total T3<br>Free T3<br>Total T4<br>Free T4<br>TSH<br>anti-TG<br>anti-TPO<br>TRAb<br>Thyroglobulin                             |
| <b>Fertility / Hormone</b> | Estradiol<br>Progesterone<br>Testosterone<br>Total-β-hCG<br>Free-β-hCG<br>Prolactin<br>FSH<br>LH                              |
| <b>Tumor Marker</b>        | CEA<br>CA125<br>CA15-3<br>CA19-9<br>Total PSA<br>Free PSA<br>SCCA<br>NSE<br>CA50<br>HE4<br>CYFRA 21-1<br>CA242<br>PGI<br>PGII |
| <b>Inflammation</b>        | PCT<br>CRP  |
| <b>Prenatal Screening</b>  | AFP<br>F-hCGβ<br>fE3  |
| <b>Anemia</b>              | FERRITIN<br>Folate**<br>Vitamin B12**   |

|                           |  |
|---------------------------|--|
| <b>Kidney Function</b>    | NGAL<br>β2-MG<br>Cys-C<br>RBP  |
| <b>Hepatic Fibrosis</b>   | CG<br>PIIINP<br>CIV<br>LN<br>HA  |
| <b>Bone Metabolism</b>    | Intact PTH<br>BGP<br>25-OH-Vit D Total<br>CT**                           |
| <b>Diabetes</b>           | C-Peptide<br>Insulin<br>hGH  |
| <b>Cardiac Marker</b>     | Troponin I<br>FABP<br>BNP<br>CK-MB<br>MYO<br>D-Dimer                     |
| <b>Allergy</b>            | Ig E   |
| <b>TORCH</b>              | Toxo IgG<br>Toxo IgM<br>Rubella IgG<br>Rubella IgM<br>CMV IgG<br>CMV IgM |
| <b>Infectious Disease</b> | HBsAg*<br>HBsAb*<br>HBeAg*<br>HBeAb*<br>HBcAb*<br>HCV*                   |

\* CE pending

\*\* In development

